



MATERIAL HANDLING

Securely mount your electronic devices (laptops, VMU's, tablets) and accessories (keyboards, mobile scanners, printers, safety lights) to your lift vehicle utilizing Gamber-Johnson material handling solutions. For more information contact sales@gamberjohnson.com.

WHAT DEVICE IS BEING MOUNTED?

Identifying your device will allow us to give you a dock or cradle to support your specific need and desired connectivity.

DELL



7160-1882-00
Latitude 7030 Rugged
Extreme Tablet
Docking Station



7160-1772-00
Latitude 7230 Rugged
Extreme Tablet
Docking Station

GETAC



7160-1584-00
F110 G6 Vehicle
Docking Station



7160-1813-00
UX10 Tablet
Docking Station



7160-1084-00
K120 Tablet
Non-Powered Cradle



7160-1675-00
ZX10 Tablet
Docking Station



7160-1936
ZX80 Tablet
Docking Station



7160-2017-00
ScanPal EDA10A
Docking Station

PANASONIC



7160-0487-00
Toughbook® G2 /
Toughpad G1
Docking Station

SAMSUNG



7160-1368-00
Galaxy Tab
Active2/3/5
Docking Station



7160-1313-00
Galaxy Tab
Active2/3/5
Charging Cradle



7160-1418-40
Galaxy Tab Active
Pro/Active4 Pro
Charging Cradle



7160-1418-00
Galaxy Tab Active
Pro/Active4 Pro
Docking Station



7160-1488-00
Galaxy XCover
Pro
Charging Cradle

UNIVERSAL



7160-1870-00
NotePad VI Universal
Computer Cradle
*Accessories Available



7160-1299-00
NotePad™
Touch Universal
Tablet Cradle
*NotePad™ Touch
XL available for larger
tablets (7160-1299-10)



7170-1124
KIT: Universal USB-C
Docking Station and
InfoCase Rugged
Docking Case for iPad
Pro 12.9" (Gen 3-6)

ZEBRA



7160-0860-00
ET50/51 55/56 10"
Docking Station
*Also available in an 8"
(7160-0861-00)



7160-1497-01
TC5X Series
Powered Cradle



7160-1509-01
TC7X Series
Powered Cradle



7160-1856
TC22/TC27
Non-Powered
Cradle



7160-1885-00
ET6X
Docking Station



7160-1801-00
ET4X 8" SLIM
Dual USB
Docking Station



7160-1807-00
ET4X 10" SLIM
Dual USB
Docking Station



7160-1506-00
ET51/56 8" SLIM
Dual USB
Docking Station



7160-1787-00
ET80/85 SLIM
Dual USB
Docking Station

WHAT MODEL VEHICLE IS YOUR DEVICE BEING MOUNTED TO?

Knowing the make and model of your vehicle will allow us to recommend the best location and corresponding product needed to mount your device.

OVERHEAD GUARD MOUNTS



7160-1591-01
Tall Adjustable
Overhead Guard
Bar Mount
*Also available in a
shorter version
(7160-1591)



7160-1156-01
Tall Overhead Bar Mount
*Also available in a short
version (7160-1156)

POLE MOUNTS



7160-0561
Guard Leg 2" to
3" Tube Clamp



7160-1356-01
Zirkona 2" to 3"
Pole Mount*
*Visit GamberJohnson.com/Zirkona for additional
lightweight mounting options

MAGNETIC MOUNT



7160-1258
Magnetic Surface Mount
*Also available in taller
version (7160-1258-01)



7160-1259
Magnetic Scanner
Pocket Mount

GUARD LEG MOUNTS



7160-1841
Guard Leg Mount
w/ Locking Swing
Arm Mount



7160-0420
Dual Clam Shell with Arm and
Small Backer Plate
*Also available with large
backer plate (7160-0421)



7160-1995
Guard Leg Mount
*Also available with
second clevis arm
(7160-2020)



7160-1261
Zirkona 4" Diamond Plate with Large
Joiner and AMPS/NEC Plate
*Also available with VESA 75 mounting
plate (7160-1261-01)

ROLL FORM BRACKETS



7160-0418 For Yale/Hyster, Crown and others
7160-0814 For Jungheinrich/ CAT/Toyota
7160-0815 For Linde Models EV-30 and EV40
7160-1542 For CLARK



Explore all of our Material Handling Solutions at GJFORKLIFTS.COM
Questions? Call our team at 800.487.9220



DOES YOUR VEHICLE HAVE A WINDSHIELD OR ENCLOSED CAB?

Identifying whether your vehicle has a windshield or is enclosed will allow us to recommend the best location and product needed to mount your device.

CAB MOUNTS



7160-1425
Cab Overhead Guard Mount



7160-1151
Toyota with Electronic Hydraulics Cab Latch Mount



7160-1233
Toyota Cab Mount



7160-1105
Flat Surface Mount



7160-1096
Clamp Bracket Adapter



7160-1109
Yale/Hyster Electric Bracket



7160-1278
Yale Hyster 40/70 Cab Mount

WHAT ACCESSORIES ARE BEING MOUNTED?

Understanding your accessory needs will allow us to build the best material handling solution for your team.

SCANNER MOUNTS



7160-1306
Adjustable Scanner Holder with Small Backer Plate
*Also available with large backer plate (7160-1306-01)



7160-1389
Scanner Pocket Tablet Mount



7170-0788
Zirkona 4" Diamond Mount with Scanner Pocket

PRINTER MOUNTS



7160-0817
Zebra QLN420 Printer Bracket



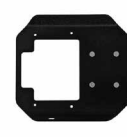
7160-1693
ZEBRA ZD620T, ZD620D, ZD621T, ZD621D, ZD421C, ZD421T, ZD421D Printer Mount



7160-1473
Zebra ZQ620 Printer Mount



7160-0888
Datamax O'Neil RL4 Printer Bracket



7160-1821
Honeywell RP2 Printer Mount



7160-1816
Honeywell RP4 Printer Mount

KEYBOARD MOUNTS



7160-0799
Tablet
Tall Version Available: (7160-0799-01)
Keyboard Mount



7160-1257
Vertical Tablet
Tall Version Available: (7160-1257-01)
Keyboard Mount



7160-0859
Number Pad Bracket

KEYBOARDS



7300-0722
iKey Keyboard*
*See website for full offering of iKey keyboards



7160-1683-00
Rugged Lite Backlit Keyboard

SHRINK WRAP MOUNTS



7160-1810
Shrink Wrap Mount - Small Back Plate



7160-1810-01
Shrink Wrap Mount - Large Back Plate

LIGHT BRACKETS



7160-0850
TYRI Redline Light Mount



7160-1719
Forklift Light Mount

CUP HOLDERS



7160-1669
Fixed Forklift Cup Holder Mount

WHAT IS THE VOLTAGE OF THE VEHICLE?



Knowing the voltage or power requirement of your lift vehicle will assist us in recommending the appropriate power supply for your need.

POWER SUPPLIES AND WIRING KIT*



DELL
7300-0305 12-32V Isolated
7300-0306 20-60V Isolated
7300-0622 72-100V Isolated



GETAC
7300-0413 12-32V Isolated
7300-0412 20-60V Isolated
7300-0416 72-110V Isolated



PANASONIC
7300-0464 12-32V Isolated
7300-0465 20-60V Isolated
7300-0417 72-110V Isolated



SAMSUNG
7300-0447 12-32V Isolated
7300-0473 20-60V Isolated
7300-0448 70-110V Isolated



ZEBRA
90° Barrel Connector
7300-0466 12-32V Isolated
7300-0467 20-60V Isolated
7300-0418 72-110V Isolated
Straight Barrel Connector
7300-0692 12-32V Isolated
7300-0693 20-60V Isolated
7300-0694 72-110V Isolated



5A OUTPUT POWER SUPPLY FOR SMALLER TABLETS*
7300-0452 12-32V Isolated
7300-0453 20-60V Isolated
7300-0454 72-110V Isolated



7300-0482
Forklift Wiring Kit



7300-0410
VoltVault Pro Shut Down Timer



7300-0409
VoltVault Shut Down Timer

*See website for full offering of power supplies

DO YOU NEED SCREEN PROTECTION OR MOBILITY OPTIONS?



Gamber-Johnson & InfoCase provide optimal ergonomic solutions. Find all mobility options at INFOCASE.COM

PROTECTIVE TABLET COVERS



7160-0949 8" Protective Cover
7160-0950 10" Protective Cover
7160-0975 12" Dell Protective Cover
7160-1606 Samsung TA2/3/5 Protective Cover
7170-0909 Samsung TA2/3/5 Protective Cover with Thermal Cover Insert

HAND STRAPS



SHOULDER STRAPS



SCREEN PROTECTION

