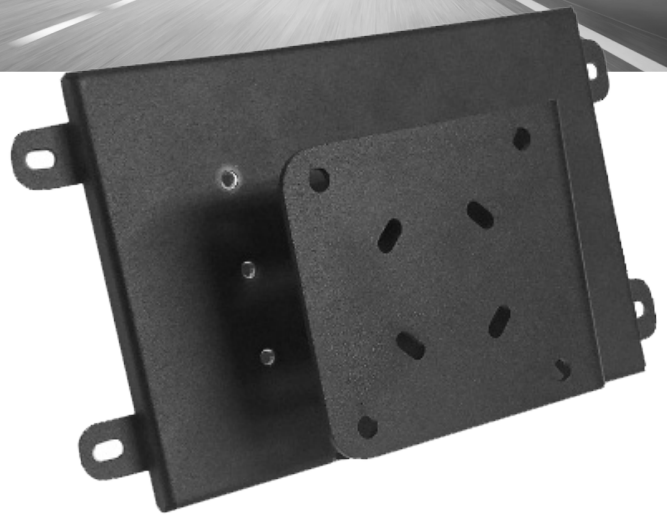




KENWORTH T680/ T880 DASH MOUNT WITH TILTING BRACKET



Designed for your mobile work environment. A rugged and reliable solution for your device.

The Kenworth T680/T880 bracket is designed to be installed directly into the dash with no additional drilling required. Our mount is an effective way of support your ELD device. With multiple AMPS patterns on the plate, this will support a multitude of places to mount your tablet or phone. The addition of slots to the bottom of the plate will allow for a clean install as wires can then be directed behind the plate.

WEIGHT	HEIGHT	WIDTH	LENGTH
2.4 lbs / 0.089 kg	4.8 in / 12.37 cm	5.66 in / 14.22 cm	9.75 in / 24.77 cm

FEATURES

- Mounting to dash with no additional drill holes preventing unwanted damage to the dash
- Allows for flexibility in mounting in different position from the plate for optimum positioning on dash
- AMPS hole pattern allows for various GJ brackets or other brackets to complete solution
- Plate mount allows positioning close to the dash allowing access to other dash accessories
- Power adapter on the rear of the mount will allow for easy access to powering your device
- Tilt mount included as the best recommended bracket to coordinate to the device
- Limited Lifetime Warranty

PRODUCT SELECTION

PART NUMBER	DESCRIPTION
7160-1283-01	Kenworth T680/T880 Dash Mount with Tilting Bracket