

INSTALLATION INSTRUCTIONS

Product

7160-1334

Revision

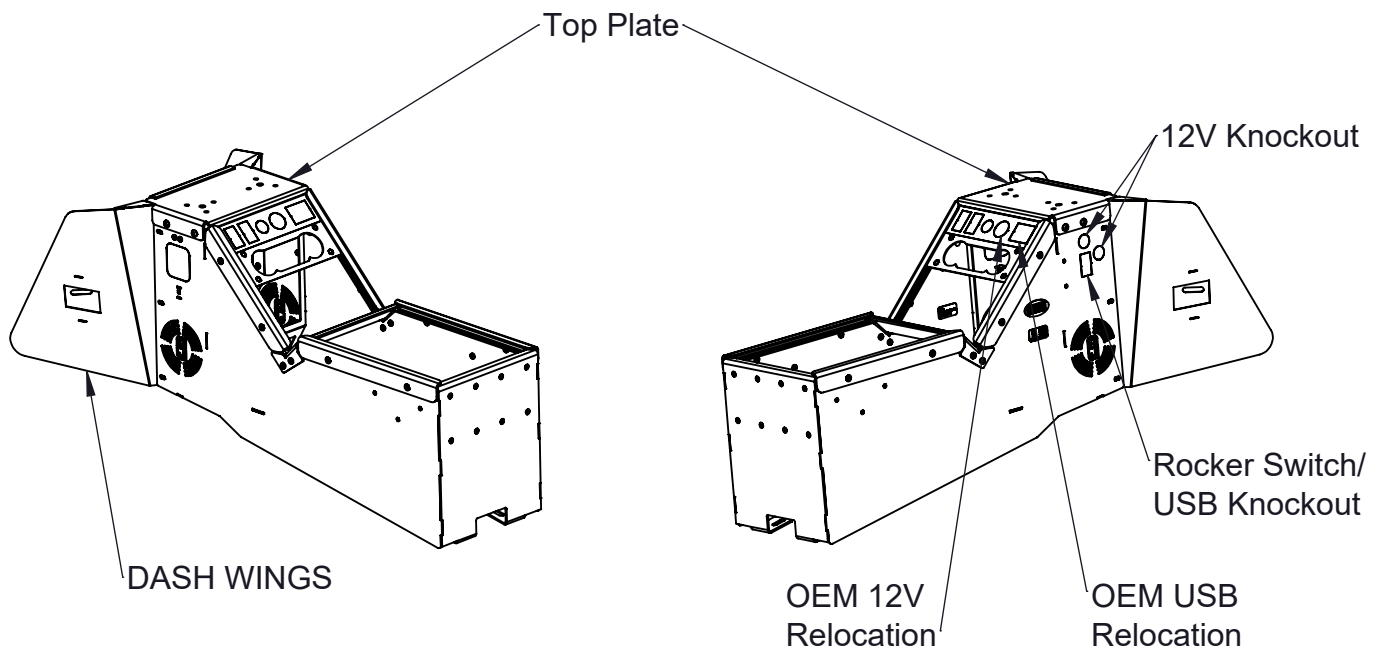
C

Form

INST-916

Description: Console Box - Ford Police Interceptor Utility 2020+

Printing Spec: PS-001



7160-1334

Product Mounting Disclaimer

Gamber-Johnson is not liable under any theory of contract or tort law for any loss, damage, personal injury, special, incidental or consequential damages for personal injury or other damage of any nature arising directly or indirectly as a result of the improper installation or use of its products in vehicle or any other application. In order to safely install and use Gamber-Johnson products full consideration of vehicle occupants, vehicle systems (i.e., the location of fuel lines, brake lines, electrical, drive train or other systems), air-bags and other safety equipment is required. Gamber-Johnson specifically disclaims any responsibility for the improper use or installation of its products not consistent with original vehicle manufactures specifications and recommendations, Gamber-Johnson product instruction sheets, or workmanship standards as endorsed through the Gamber-Johnson Certified Installer Program.

© Copyright 2019 Gamber-Johnson, LLC

If you need assistance or have questions, call Gamber-Johnson at 1-800-456-6868

Installation:

1. Remove the OEM Center console by loosen the 4 nuts using 10MM socket.(shown in figure 1)
2. Remove the OEM center trim by loosen the 2 bolts holding it using 7MM socket. Remove the OEM 12v/USB/E-brake from the Trim, (to remove the E-brake use T20 socket.)



Figure 1

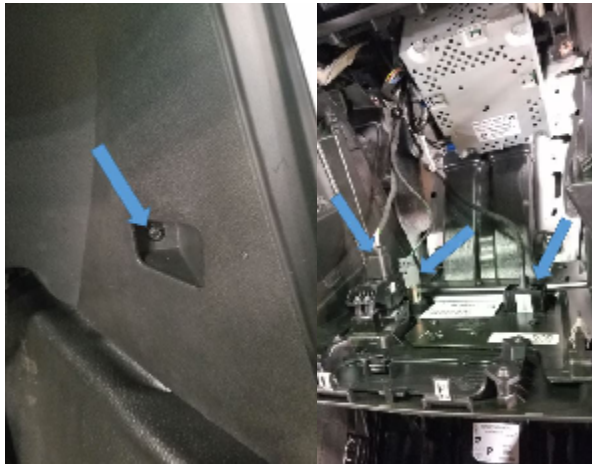


Figure 2

3. Remove the 2 nuts holding the OEM electronic Controller with 10MM socket. (do not remove the controller)



Figure 3

Installation (continued):

4. Now place the GJ 2020+ Utility console box in place, align the mounting holes with the OEM studs as shown in Figure 4. and hand tighten the OEM nuts.

5. With the Console in place, installed the trim wings using the hardware provided, #10 washer and #10 screw to secure the wings to the console (Blue arrow) and use the OEM 7MM (yellow arrow) bolt, to secure the wings to the OEM dash. (Figure 5)

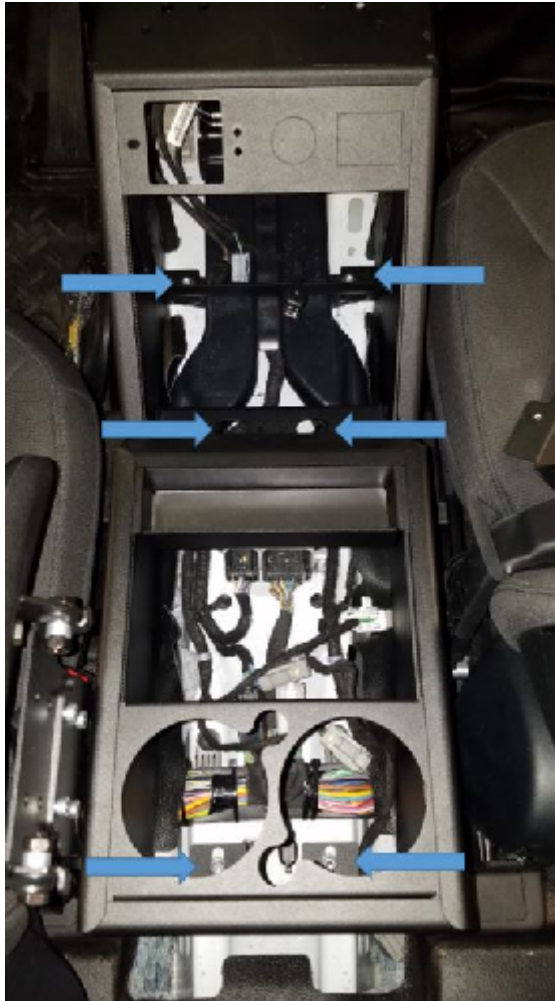


Figure 4

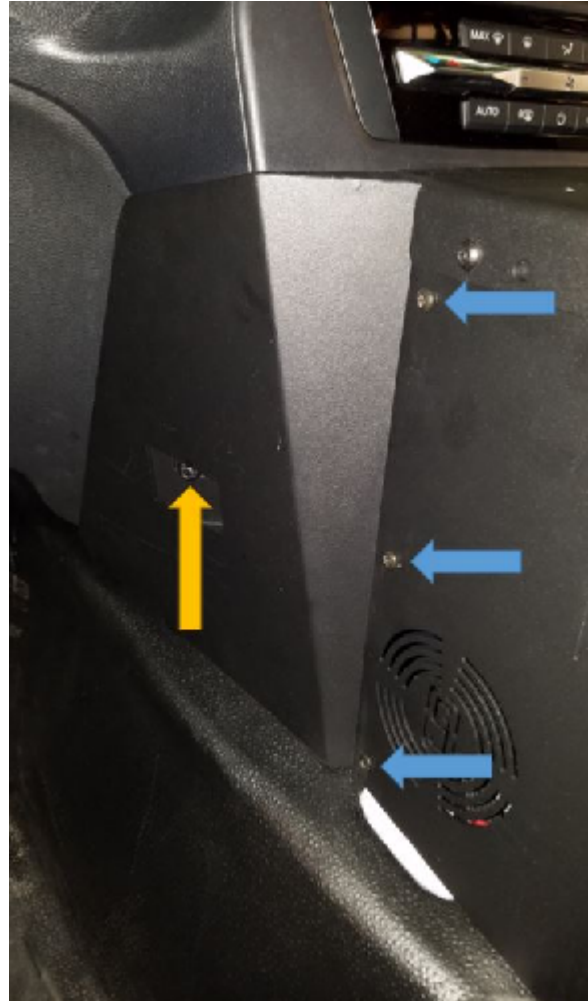


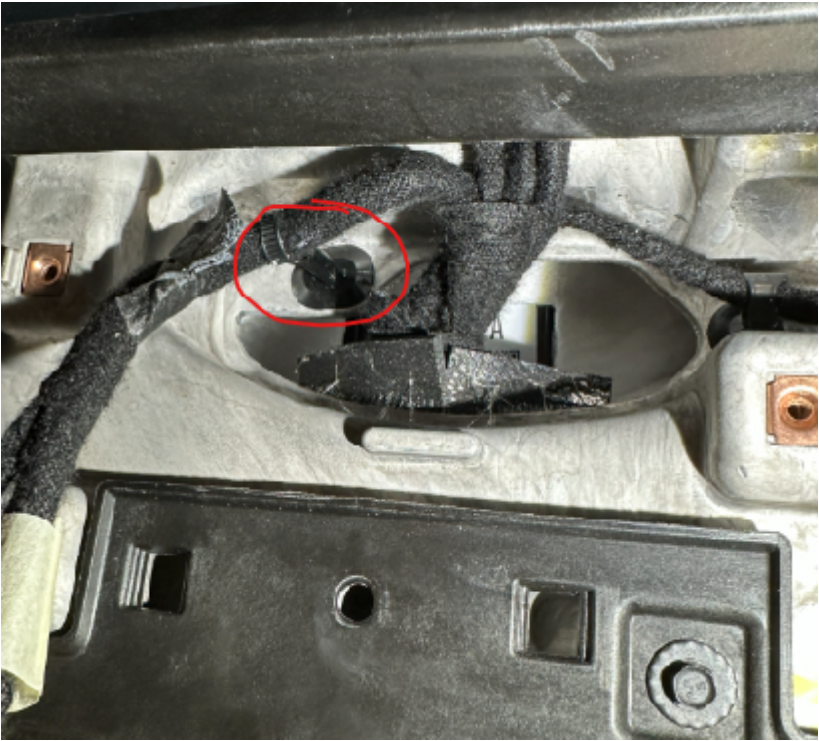
Figure 5

6. With everything in place, tighten down all bolts and nuts and check to make sure everything is secure.

*The Top Plate and Center Brace on both console boxes are designed to be removable to aid in installation and cable routing. If either item is removed Gamber-Johnson recommends reinstalling the screws with a drop of Blue 242 Loctite to prevent loosening. Torque the (4) top plate bolts to 65-80 in-lbs when reinstalling.

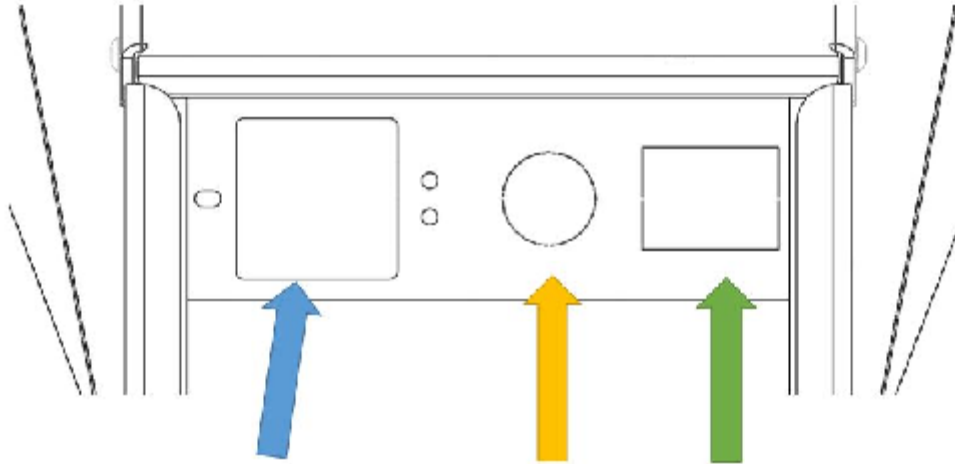
Installation (continued OEM Relocation):

The OEM rear HVAC controls can be relocated to the provided face plate and hardware. It is recommended to cut the zip tie shown below to increase the available length of the wiring harness.



Installation (continued OEM Relocation):

For OEM E-brake switch (blue arrow)/12v (yellow arrow) /USB (green arrow) can be relocated to the Provided face plate and hardware



Optional:

If the Vehicle is equipped with the factory rear wire chase, a Gamber Johnson wire cover (7160-1407) can be installed to complete the wire chase to the gamber johnson 2020 Utility Console. *7160-1335 Short console box does not require the cover kit. as it will attach directly to the wire chase

