



MOUNTING SYSTEMS CATALOG



THE FORKLIFT

SECURE YOUR ASSETS WITH A NAME YOU CAN TRUST

We offer a wide range of turnkey solutions that are configurable for your material handling vehicle's specific make and model. Our ergonomic solutions enhance driver efficiency, reduce installation time, speed up operations, and improve overall workplace safety. To narrow down the best solution for your fleet, begin by asking yourself these five important questions:

1 WHAT DEVICE IS BEING MOUNTED?

Identifying your device ensures that you get the correct dock or cradle to support your specific need and desired connectivity.

2 WHAT MODEL VEHICLE IS THE DEVICE BEING MOUNTED TO?

Knowing the make and model of your vehicle will allow us to recommend the best location and corresponding product needed to mount your device.

3 WHAT IS THE VEHICLE'S VOLTAGE?

By knowing the voltage or power requirement of your lift vehicle we can ensure that you get the appropriate power supply for your specific need.

4 WHAT ACCESSORIES ARE BEING MOUNTED?

Understanding your accessory needs will allow us to build the best material handling solution for your team.

5 DOES THE FORKLIFT HAVE AN ENCLOSED CAB?



TABLE OF CONTENTS

GUARD LEG MOUNT WITH LOCKING SWING ARM.....	4
ADJUSTABLE OVERHEAD GUARD BAR MOUNT-TALL	5
DUAL CLAM SHELL WITH ARTICULATING ARM & SMALL PLATE.....	6
FLAT SURFACE MAGNET MOUNT WITH CLEVIS.....	7
OVERHEAD GUARD CAB MOUNT.....	7
ZIRKONA 4" DIAMOND PLATE WITH LARGE JOINER AND AMPS/NEC PLATE	8
ZIRKONA 4" DIAMOND PLATE WITH LARGE JOINER AND VESA 75MM PLATE.....	9
ZIRKONA 4" DIAMOND MOUNT WITH 6" MEDIUM DOG-BONE AND AMPS PLATE.....	10
ZIRKONA 4" DIAMOND PLATE WITH LARGE JOINER AND AMPS/NEC PLATE.....	10
FORKLIFT FAN MOUNTING BRACKET KIT	11
CLARK ROLL FORMED PILLAR BRACKET	11
SCANNER POCKET MOUNT.....	12
SCANNER POCKET TABLET MOUNT	13
SCANNER HOLDER W/MAGNET MOUNT.....	13
FIXED FORKLIFT CUP HOLDER MOUNT.....	14
SHRINK WRAP MOUNT	15
FORKLIFT LIGHT MOUNT	16
PRINTER MOUNTS.....	17
ACCESSORIES	18
HEAVY DUTY LIFT VEHICLE MOUNTS	20
ZIRKONA LIGHT DUTY LIFT VEHICLE MOUNTS.....	22

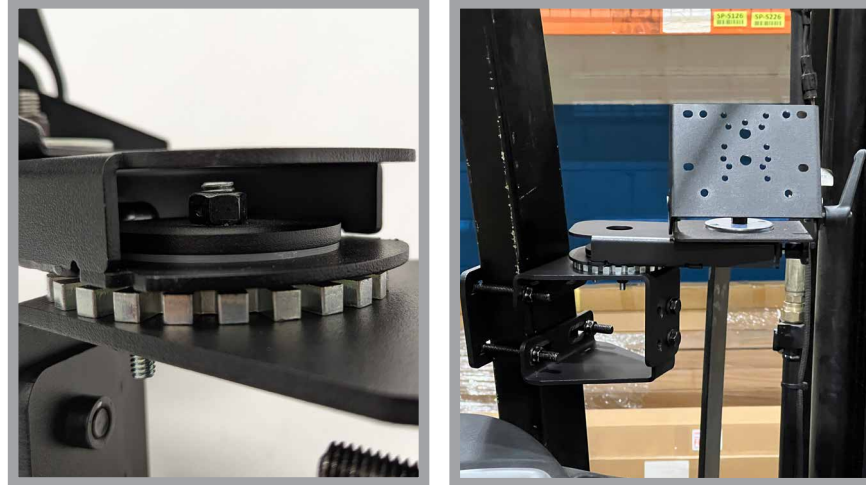
Guard Leg Mount with Locking Swing Arm

P# 71601841

Weight, 10.5 lbs. / 4.76 kg
Height, 8 in / 20.32 cm
Width, 8 in / 20.32 cm
Depth, 12 in / 30.48 cm

Mount any device securely to forklift overhead guard legs. Gamber-Johnson Universal Mount attaches to all popular forklift guard legs. The locking swing arm keeps your devices positioned

- Mounting Versatility: Mount sandwiches the overhead guard leg and allows user to position the device at the desired height position
- One mount for all forklift overhead guard legs. The universal mounting design makes this the only mount you will need.
- Locking Swing Arm locks devices in place and can be easily adjusted with one hand operation
- Standard Clevis can be swiveled 360° on locking swing arm
- Standard Clevis can be tilted 90° fore and 26° aft
- Standard Clevis features AMPS, NEC and 75mm VESA hole patterns for mounting all devices
- Heavy gauge steel construction for long-term durability in a rugged environment
- Black powder coat finish for maximum corrosion resistance



Adjustable Overhead Guard Bar Mount-Tall

P# 7160159101

Weight, 10 lbs / 4.54 kg
Height, 14.38 in / 36.53 cm
Width, 5 in / 12.7 cm
Depth, 4.5 in / 11.43 cm

Adjustable mount designed with extended height and the flexibility to attach to angled or vertical cross bars on a variety of OEM overhead guards. Positions and secures your device to maximize operator workspace, increase safety, and ergonomics.

- Positions device at the forward most point of the cross bar allowing for a secure and ergonomic position
- Attaches to angled or vertical forward cross bars, from 0-90 degrees, allowing the mount to attach to a variety of OEM overhead guards
- Vertical adjustability allows the end user to position the device to their specific need
- Updated back plate design allows the mount to be attached between narrow and wide overhead guard grates
- Allows for flexibility in mounting in different positions overhead
- Provides ergonomic tilt and swivel options to position your device



Dual Clam Shell with Articulating Arm and Small Plate

P# 71600420

Weight, 7.95lbs. / 3.6 kg
 Height, 10.08 in / 25.6 cm
 Width, 7.43 in / 18.9 cm
 Depth, 9.96 in / 25.3 cm



Placement

- Attaches to rectangular forklift support braces 1.5" to 2.5" wide

Tilt

- Yes - Clevis up to 90° fore; Yes - Clam Shells up to 160°

Swivel

Motion Attachment - 360°; Entire arm - 360°

Clam Shell Features

- Heavy gauge steel construction for long-term durability in a rugged environment
- Black powdercoat finish for maximum corrosion resistance
- Clam Shell features the following hole patterns: AMPS, NEC, 75mm VESA, Gamber-Johnson 2"x 4.09"
- The entire arm can rotate around 360° and the Motion Attachment can also rotate 360°
- Arm extends, bringing equipment closer to the user
- Arm can be tighten down to be locked into a permanent position
- Tilt capabilities:
 - 90° forward allows for tablets to be easily mounted
 - 26° aft movement with a positive stop at 26°
 - Riveted design allows for smoother tilt movement

- To tilt the Clam Shell simply loosen the adjustable lever, tilt to desired position and then re-tighten the lever
- A secondary bolt is included to lock the clevis into a permanent position

Small Plate Features

- Heavy gauge steel construction for long-term durability in a rugged environment
- Black powdercoat finish for maximum corrosion resistance
- Clam Shell features the following hole patterns: AMPS, NEC and 75mm VESA
- The Clam Shell can be tilted up or down for a total of 160°
- To tilt the Clam Shell simply loosen the adjustable lever, tilt to desired position and then re-tighten the lever
- A secondary bolt is included to lock the clam shell into a permanent position
- Plate sandwiches the overhead guard leg and allows user to position the device at the desired height position

Warranty

- Limited Lifetime Warranty

Flat Surface Magnet Mount with Clevis

P# 71601258

Weight, 7.50 lbs / 3.40 kg
 Width, 6.50 in / 16.51 cm
 Height, 6.27 in / 15.93 cm
 Depth, 6.50 in / 16.51 cm



- Designed to eliminate any unnecessary drilling
- Base magnets allow a quick way to mount and dismount to any flat metal surface
- Tilt and swivel adjustability provide ergonomic comfort and ease of use
- Multiple mounting hole patterns including VESA 75mm

- and AMPs to support various GJ devices and other peripherals
- Heavy gauge steel construction for long-term durability in a rugged environment
- Limited Lifetime Warranty

Overhead Guard Cab Mount

P# 71601425

Weight, 10.10 lbs / 4.58 kg
 Width, 5.50 in / 13.97 cm
 Height, 11.00 in / 27.94 cm
 Length, 12.25 in / 31.12 cm

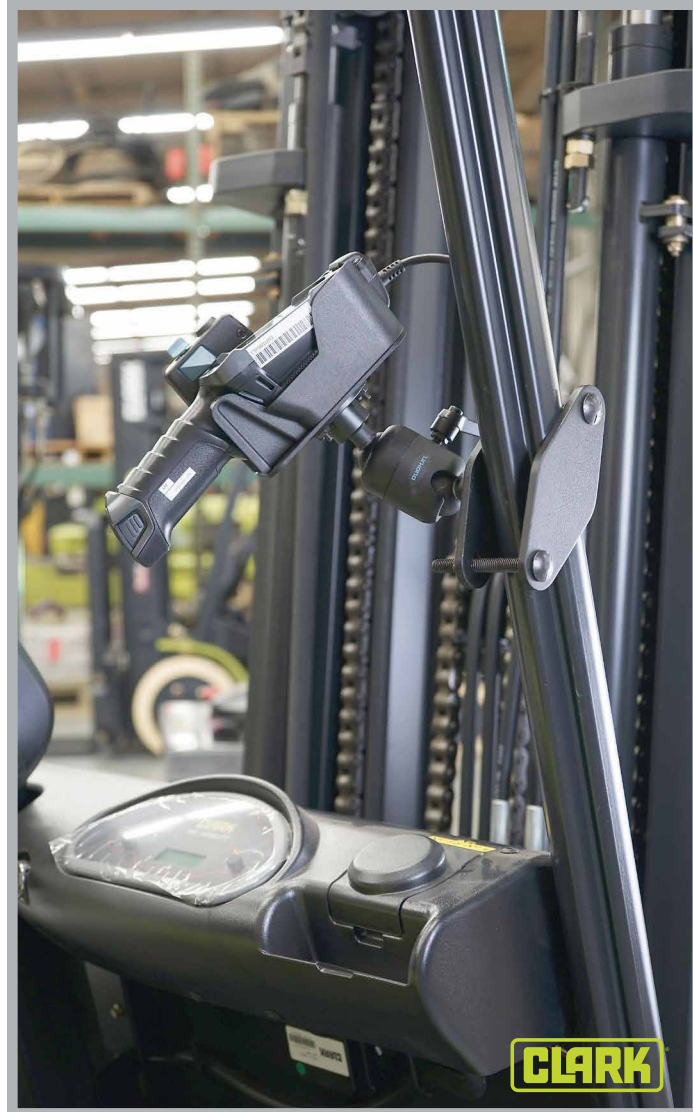


- Quick and easy installation with no drilling required for decreased install times and increased vehicle up-time
- A multitude of positioning configurations for optimal operator access
- Adaptable to various overhead guard types with cabs

- Features the Gamber Clevis for mounting any device utilizing standard AMPs, NEC, or VESA 75mm universal hole patterns
- Limited Lifetime Warranty

Zirkona 4" Diamond Plate with Large Joiner and AMPS/NEC Plate P# 71601261

Weight, 2.70 lbs / 1.22 kg
 Height, 2.5 in / 6.35 cm
 Width, 5.68 in / 14.43 cm
 Depth, 5.75 in / 14.61 cm



- Mounts to various overhead guard leg profiles such as rectangular and roll formed
- Includes large joiner with AMPS and NEC mounting hole patterns to mount countless docks, cradles and other peripherals
- Small form factor to secure light weight devices up to 8 lbs in a material handling shock environment
- Easy to install mounting solution with no drilling required and ample adjustability to accommodate operator comfort and ease of use
- Large Joiner Maximum Weight Capacity
- Vibration environment - Joiner holds up to 11 lbs / 5kg
- Static environment - Joiner hold up to 55 lbs / 25kg
- Warning: Extension tube will lower the overall payload rating of the joiner. The longer the extension, the lower the overall rating for the joiner.
- 1 Year Limited Warranty

Zirkona 4" Diamond Plate with Large Joiner and VESA 75mm Plate P# 7160126101

Weight, 2.80 lbs / 1.27 kg
 Height, 2.5 in / 6.35 cm
 Width, 5.68 in / 14.43 cm
 Depth, 5.75 in / 14.61 cm



- Mounts to various overhead guard leg profiles such as rectangular and roll formed
- Includes large joiner with VESA 75mm mounting hole pattern to mount countless docks, cradles and other peripherals
- Small form factor to secure light weight devices up to 8 lbs in a material handling shock environment
- Easy to install mounting solution with no drilling required and ample adjustability to accommodate operator comfort and ease of use
- **Large Joiner Maximum Weight Capacity**
- Vibration environment - Joiner holds up to 11 lbs / 5kg
- Static environment - Joiner hold up to 55 lbs / 25kg
- Warning: Extension tube will lower the overall payload rating of the joiner. The longer the extension, the lower the overall rating for the joiner.
- 1 Year Limited Warranty



Zirkona 4" Diamond Mount with 6" Medium Dog-Bone and AMPs Plate P# 71601466

Diverse and adaptable lightweight design constructed and rigorously tested to perform in harsh material handling environments.



Weight, 3.25 lbs / 1.47 kg
 Height, 5.00 in / 12.70 cm
 Width, 6.00 in / 15.24 cm
 Length, 9.50 in / 24.13 cm

Forklift Fan Mounting Bracket Kit P# 71700774

P# 71700774

Weight, 3.00 lbs / 1.36 kg
 Width, 5.68 in / 14.43 cm
 Height, 2.75 in / 6.99 cm
 Length, 5.75 in / 14.61 cm



- Quick and easy installation with no drilling required for decreased install times
- Ability to mount virtually anywhere on a fork trucks overhead guard or guard legs

- Rugged lightweight solution to withstand the toughest material handling environments
- Limited Lifetime Warranty

Zirkona 4" Diamond Plate with Large Joiner and AMPS/ NEC Plate P# 71601261

When it comes to mounting lightweight devices turn to our diamond plate mounts for a quick reliable solution that provides ample adjustability to accommodate operator comfort and ease of use.



Weight, 2.70 lbs / 1.22 kg
 Height, 2.5 in / 6.35 cm
 Width, 5.68 in / 14.43 cm
 Length, 5.75 in / 14.61 cm

CLARK Roll Formed Pillar Bracket P# 71601542

P# 71601542

Weight, 2.70 lbs. / 1.22 kgs.
 Height, 4.68 in. / 11.89 cm
 Width, 5.65 in. / 14.35 cm
 Length, 3.32 in. / 8.43 cm



- Specifically designed to fit CLARK forklifts with roll formed overhead guard legs
- Adaptable to various Gamber-Johnson mounts to create a secure and total solution

- Limited Lifetime Warranty

Scanner Pocket Mount

P# 71601306 & 7160130601

71601306

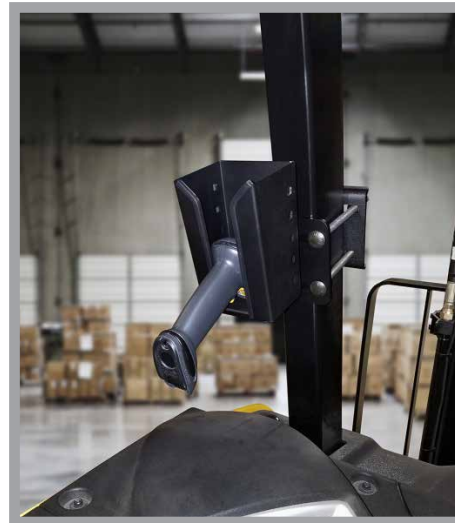
Weight, 5.21 lbs. / 2.36 kg
Height, 2.5 in. / 6.35 cm
Width, 4.5 in. / 11.43 cm
Depth, 6.0 in. / 15.24 cm

71601306-01

Weight, 7.05 lbs. / 3.20 kg
Height, 2.5 in. / 6.35 cm
Width, 4.5 in. / 11.43 cm
Depth, 6.0 in. / 15.24 cm

This scanner mount is designed to support your scanner or handheld computer in a rugged environment by holding it securely to the overhead guard leg of your lift vehicle. It is adjustable in width, and offers 3 mounting orientations from the overhead guard leg or one of our extension bars.

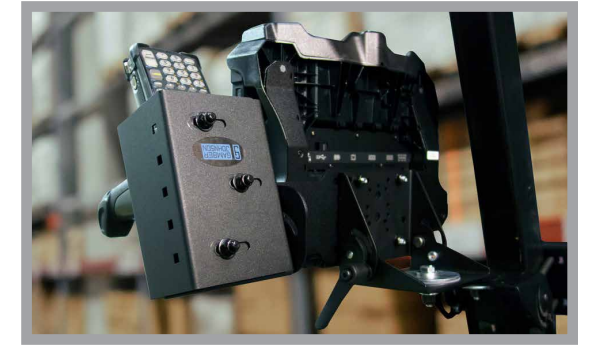
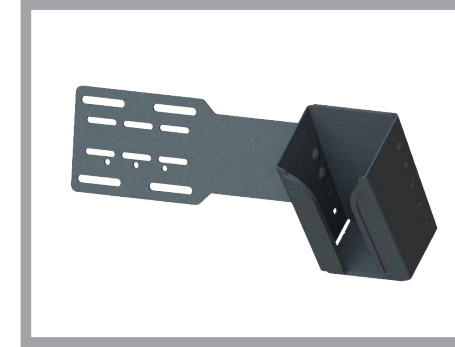
- Designed to hold most handheld computers and scanners
- Adjustable to fit 3.5" to 4.5" width and set at 2.5" tall
- Designed to be orientated inside, outside, or inline with the overhead guard leg
- 7160-1306 attaches to rectangular overhead guard legs that are 1.5 in to 2.5 in (3.81 cm to 6.35 cm) wide
- 7160-1306-01 Attaches to rectangular forklift support braces 2.5 in to 5.0 in (6.35 cm to 12.7 cm) wide
- Can also be mounted to our horizontal and vertical extension bars



Scanner Pocket Tablet Mount

P# 71601389

Minimize your work envelope by securely mounting your handheld device adjacent to your Gamber-Johnson dock/cradle.



Weight, 3.25 lbs / 1.47 kg
Height, 3.25 lbs / 1.47 kg
Width, 4.00 in / 10.16 cm
Depth, 13.25 in / 33.66 cm

Scanner Holder w/ Magnet Mount

P# 71601259

The 7160-1259 is designed to support your handheld scanner. Four heavy duty magnets secure this mount in place to any flat surface. Ideal for use with lift trucks that require a mounting solution outside of the overhead guard. The Gamber-Johnson Magnet Mount Scanner Holder offers a rugged option to withstand the demands of today's mobile work environments.



Weight, 5.55 lbs / 2.52 kg
Height, 7.80 in / 19.81 cm
Width, 6.37 in / 16.18 cm
Depth, 6.00 in / 15.24 cm

Fixed Forklift Cup Holder Mount

P# 71601669

Weight, 2 lbs / 0.91 kg
 Height, 3.75 in / 9.53 cm
 Width, 4.5 in / 11.43 cm
 Depth, 8 in / 20.32 cm

The Fixed Forklift Cup Holder Mount is designed to hold several types of covered mugs for operators. It also has a built-in pen/pencil holder as an extra feature.

- Clamps to overhead guard leg with the 4" diamond plate
- Single nut positioning to adjust angle for cup holder
- Plastic removable cup for easy cleaning
- Pen holder included in cup holder design



Shrink Wrap Mount

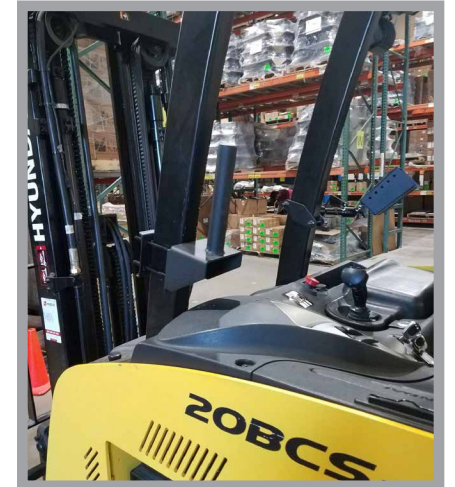
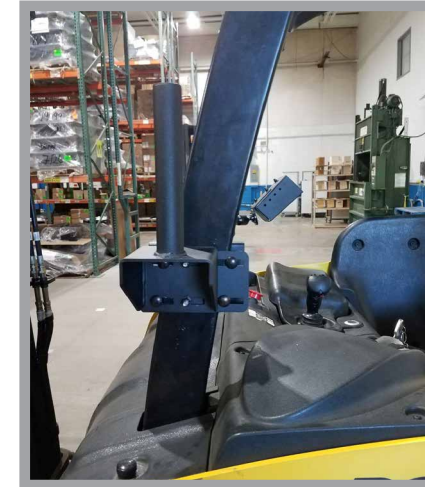
P# 71601810 & 7160181001

7170100410
 Weight, 3.5 lbs. / 1.59 kg
 Height, 5 in / 12.7 cm
 Width, 5 in / 12.7 cm
 Depth, 13 in / 33.02 cm

7160130601
 Weight, 4 lbs. / 1.81 kg
 Height, 5 in / 12.7 cm
 Width, 5 in / 12.7 cm
 Depth, 13 in / 33.02 cm

Keep stretch film rolls within reach and secure with this efficient mount to carry tubes of stretch wrap on your forklift. Mounts quickly to the overhead guard leg. Use the small back plate to mount to 1 1/2" to 2 1/2" overhead guard legs. Use the large back plate to mount to 2 1/2" to 5" overhead guard legs. Add this mount to your forklift as an efficient solution for storing film rolls.

- Added Safety: Secures stretch wrap roll on forklift. No worry about stretch wrap rolling in the way of the operator or off the forklift
- Accommodates different length stretch wrap rolls with standard 3" tube
- Ideal for convenient storage of stretch wrap rolls
- Stretch wrap rolls can be quickly removed and replaced without any tools needed
- Small Back Plate mounts to 1 1/2" to 2 1/2" overhead guard legs
- Large Back Plate mounts to 2 1/2" to 5" overhead guard legs
- Mounting versatility. You decide where to place stretch wrap roll for ease of access and out of operator way.
- Rugged: All metal construction and powder coated for long lasting durability



Forklift Light Mount

P# 71601719

Weight, 1 lbs. / 0.45 kg
 Height, 2 in / 5.08 cm
 Width, 2 in / 5.08 cm
 Depth, 7 in / 17.78 cm

Increase warehouse safety, Gamber-Johnson Forklift Light Mount bracket securely attaches any type or style of LED light the forklift quickly. Present a visual alert to increase warehouse safety, minimize the risk of accidents, and improve visible awareness of approaching lift vehicles.

- Mounts to most overhead guard legs
- Placement: Attaches directly to the overhead guard
- No need for custom brackets, our mount accommodates multiple overhead guard profiles
- Improve workplace safety by mounting a visual indicator to your lift vehicles to know when they are approaching
- Light pivot bracket allows for safety light to be positioned where you need it
- Black powder coat finish enabling maximum corrosion resistance and product longevity



Printer Mounts

Gamber-Johnson has partnered with Zebra and Honeywell to give you a solution for easier, faster printing technology. These printer mounts are designed to withstand industrial use and offers reliable, on-demand printing mount options.

ZEBRA PRINTER MOUNTS

Maximize your forklift space with Zebra printer mounts. Attach a clam shell to your printer mount to adjust the printer to any desired position.



ZEBRA ZD620D, ZD620T, ZD621D, AND ZD621T, 75MM HP PRINTER MOUNT (7160-1693)



ZEBRA ZQ610/ZQ620 PRINTER BRACKET (7160-1473)



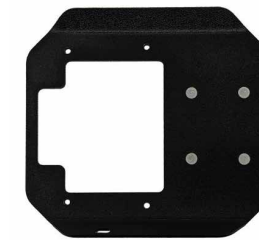
ZEBRA ZQ500 PRINTER MOUNT (7160-1053)



ZEBRA ZQ630/QLN420 PRINTER BRACKET (7160-0817)

HONEYWELL PRINTER MOUNTS

Gamber Johnson forklift mounting solutions provide rugged and reliable mounting options for Honeywell printers.



HONEYWELL RP2 PRINTER MOUNT (7160-1821)



HONEYWELL RP4 PRINTER MOUNT (7160-1816)



FIND ALL OF OUR PRINTER MOUNT OPTIONS HERE



Accessories

With today's mobile work environments being inundated with technology, Gamber-Johnson has you covered with various peripheral and accessory needs to ease day-to-day tasks, improve ergonomics, and increase overall workplace productivity and safety.



**RETRACTABLE SCANNER REEL
(7300-0302)**

Support a scanner or handheld computer that weighs between 1.5 - 3 lbs.



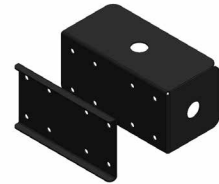
**CABLE REEL HANGER
(7160-1319)**

Designed to provide a solution for hanging the retractable scanner reel. The design is intended to hang from the one of the bars in the overhead guard. Designed to support the Retractable Scanner Reel (7300-0302)



**FORKLIFT POWER SUPPLY CLAMP
(7160-1333)**

Clamp power supply to the overhead guard leg for ease of accessibility and keep it out of the way.



**ANTENNA BRACKET
(7160-1303)**

Securely affix a wide variety of single bolt mounted antennas to enhance connectivity where it matters most.



**CUP HOLDER
(7160-1669 & 7160-1297)**

Designed to hold several types of covered mugs for operators.



**FAN MOUNTS
(7160-1588 & 7170-0774)**

Rugged lightweight mounting option for your fork truck fan accessory.

POWER AND WIRE HARNESS SYSTEMS



**NON-ISOLATED
POWER SUPPLY
24 VDC TO 12 VDC
(7300-0449)**

Compatible with 8" & 10" Thermal table Protective Covers for 24V Electric Vehicles



**NON-ISOLATED
POWER SUPPLY
36/48 VDC TO 12
VDC (7300-0450)**

Compatible with 8" & 10" Thermal table Protective Covers for 36V to 48V Electric Vehicles



**LIND ISOLATED
POWER SUPPLY**

(see website for full assortment) Use to power Gamber Johnson Docking Stations. 12V-32V for gas powered vehicles. 20V-60V for electric powered vehicles. See specific Gamber Johnson Docking station to verify power supply requirements.



**WIRE HARNESS
2.5MM DC POWER
PLUG WITH 10 AMP
IN-LINE FUSE
(7160-1804)**



**FORKLIFT WIRING KIT
(7300-0482)**

Notes

HEAVY DUTY LIFT VEHICLE MOUNTS

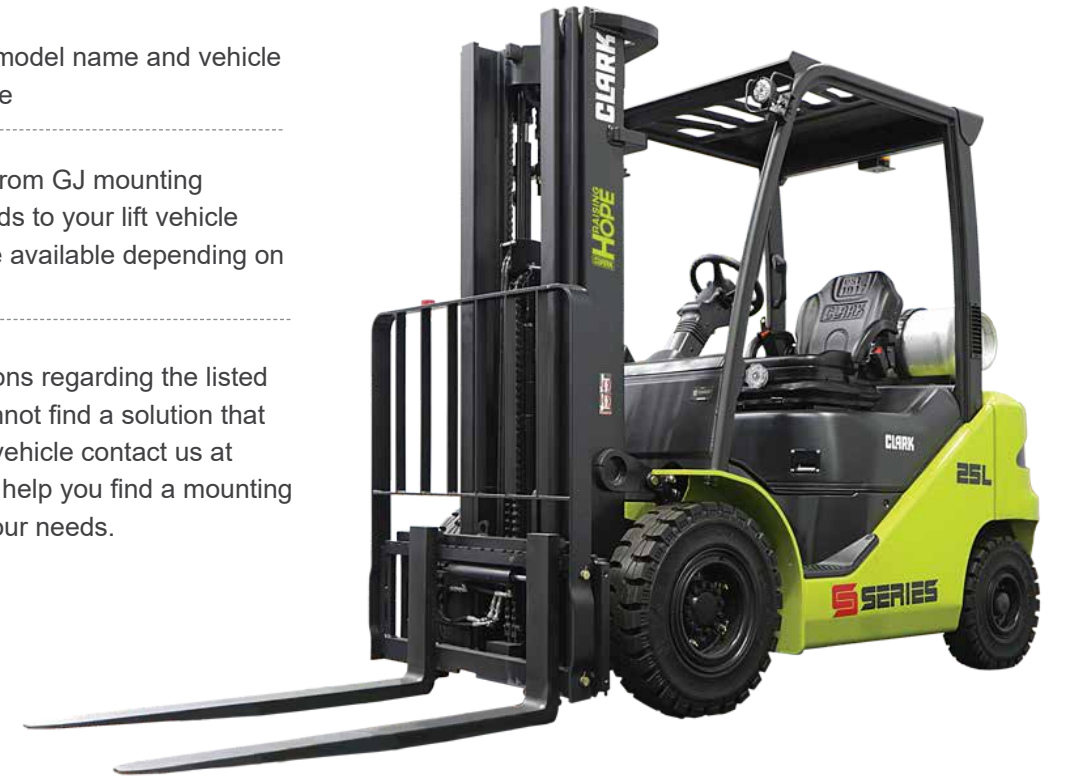
Secure your tablets and equipment with our superior mounting solutions, for ultimate peace of mind. We offer a wide range of turnkey solutions that are configurable for your material handling vehicle's specific make and model. Our ergonomic solutions enhance driver efficiency, reduce installation time, speed up operations, and improve overall workplace safety.

CLARK				
MODEL	VEHICLE TYPE	VOLTAGE	HEAVY DUTY SOLUTION I PART #	HEAVY DUTY SOLUTION II PART #
C40	Sit Down	12VDC	7160-1841	
C45	Sit Down	12VDC	7160-1841	
C50s	Sit Down	12VDC	7160-1841	
C55s	Sit Down	12VDC	7160-1841	
S20	Sit Down	12VDC	7160-1841	
S25	Sit Down	12VDC	7160-1841	
S30	Sit Down	12VDC	7160-1841	
S32c	Sit Down	12VDC	7160-1841	
S35	Sit Down	12VDC	7160-1841	
OSX15	Narrow Aisle Order Picker	24/36VDC	7160-1156-01	
OSQ126	Order Picker	24VDC	7160-1156-01	
OSQ162	Order Picker	24VDC	7160-1156-01	
OSQ192	Order Picker	24VDC	7160-1156-01	
HWXE 30	Pallet Rider	24VDC	7160-1258	
HWXE 40	Pallet Rider	24VDC	7160-1258	
ECS25	Sit Down	36VDC	7160-1841	
ECX20	Sit Down	36/48VDC	7160-1841	
ECX25	Sit Down	36/48VDC	7160-1841	
ECX30	Sit Down	36/48VDC	7160-1841	
ECX32	Sit Down	36/48VDC	7160-1841	
GTS20	Sit Down	12VDC	7160-1841	
GTS25	Sit Down	12VDC	7160-1841	
GTS30	Sit Down	12VDC	7160-1841	
GTS33	Sit Down	12VDC	7160-1841	

CLARK				
MODEL	VEHICLE TYPE	VOLTAGE	HEAVY DUTY SOLUTION I PART #	HEAVY DUTY SOLUTION II PART #
TMX12	Sit Down	36/48VDC	7160-1841	7160-1591-01
TMX15	Sit Down	36/48VDC	7160-1841	7160-1591-01
TMX15s	Sit Down	36/48VDC	7160-1841	7160-1591-01
TMX17	Sit Down	36/48VDC	7160-1841	7160-1591-01
TMX20	Sit Down	36/48VDC	7160-1841	7160-1591-01
TMX25	Sit Down	36/48VDC	7160-1841	7160-1591-01
ESX12	Stand Up	36/48VDC	7160-1841	
ESX15	Stand Up	36/48VDC	7160-1841	
ESX15s	Stand Up	36/48VDC	7160-1841	
ESX17	Stand Up	36/48VDC	7160-1841	
ESX20	Stand Up	36/48VDC	7160-1841	
ESX22	Stand Up	36/48VDC	7160-1841	
ESX25	Stand Up	36/48VDC	7160-1841	
NPX15D	Stand Up Reach	24/36VDC	7160-1156-01	
NPX17	Stand Up Reach	24/36VDC	7160-1156-01	
NPX20	Stand Up Reach	24/36VDC	7160-1156-01	
NPX22	Stand Up Reach	24/36VDC	7160-1156-01	
WSRX	Walkie Pallet Jack	24VDC	7160-1258	

To select the correct mounting solution for your lift vehicle follow these steps:

- 1 Note the manufacturer, model name and vehicle voltage of your lift vehicle
- 2 Select the part number from GJ mounting solutions that corresponds to your lift vehicle (multiple options may be available depending on the lift vehicle)
- 3 Should you have questions regarding the listed mounting solution or cannot find a solution that corresponds to your lift vehicle contact us at (800) 487-9220. We will help you find a mounting solution that will meet your needs.



ZIRKONA LIGHT DUTY LIFT VEHICLE MOUNTS

Secure your tablets and equipment with our superior mounting solutions, for ultimate peace of mind. We offer a wide range of turnkey solutions that are configurable for your material handling vehicle's specific make and model. Our ergonomic solutions enhance driver efficiency, reduce installation time, speed up operations, and improve overall workplace safety.

CLARK

MODEL	VEHICLE TYPE	VOLTAGE	ZIRKONA LIGHT DUTY SOLUTION I	ZIRKONA LIGHT DUTY SOLUTION II	ZIRKONA LIGHT DUTY SOLUTION III	ZIRKONA LIGHT DUTY SOLUTION IV
C40	Sit Down	12VDC	7160-1261	7160-1261-01	7160-1466	7160-1466-01
C45	Sit Down	12VDC	7160-1261	7160-1261-01	7160-1466	7160-1466-01
C50s	Sit Down	12VDC	7160-1261	7160-1261-01	7160-1466	7160-1466-01
C55s	Sit Down	12VDC	7160-1261	7160-1261-01	7160-1466	7160-1466-01
S20	Sit Down	12VDC	7160-1261	7160-1261-01	7160-1466	7160-1466-01
S25	Sit Down	12VDC	7160-1261	7160-1261-01	7160-1466	7160-1466-01
S30	Sit Down	12VDC	7160-1261	7160-1261-01	7160-1466	7160-1466-01
S32c	Sit Down	12VDC	7160-1261	7160-1261-01	7160-1466	7160-1466-01
S35	Sit Down	12VDC	7160-1261	7160-1261-01	7160-1466	7160-1466-01
OSX15	Narrow Aisle Order Picker	24/36VDC	7160-1261	7160-1261-01	7160-1466	7160-1466-01
HWXE 30	Pallet Rider	24VDC	7160-1356	7160-1356-01		
HWXE 40	Pallet Rider	24VDC	7160-1356	7160-1356-01		
ECS25	Sit Down	36VDC	7160-1261	7160-1261-01		
ECX20	Sit Down	36/48VDC	7160-1261	7160-1261-01		
ECX25	Sit Down	36/48VDC	7160-1261	7160-1261-01		
ECX30	Sit Down	36/48VDC	7160-1261	7160-1261-01		
ECX32	Sit Down	36/48VDC	7160-1261	7160-1261-01		
GTS20	Sit Down	12VDC	7160-1261	7160-1261-01		
GTS25	Sit Down	12VDC	7160-1261	7160-1261-01		
GTS30	Sit Down	12VDC	7160-1261	7160-1261-01		
GTS33	Sit Down	12VDC	7160-1261	7160-1261-01		
TMX12	Sit Down	36/48VDC	7160-1261	7160-1261-01	7160-1466	7160-1466-01
TMX15	Sit Down	36/48VDC	7160-1261	7160-1261-01	7160-1466	7160-1466-01
TMX15s	Sit Down	36/48VDC	7160-1261	7160-1261-01	7160-1466	7160-1466-01
TMX17	Sit Down	36/48VDC	7160-1261	7160-1261-01	7160-1466	7160-1466-01

CLARK

MODEL	VEHICLE TYPE	VOLTAGE	ZIRKONA LIGHT DUTY SOLUTION I	ZIRKONA LIGHT DUTY SOLUTION II	ZIRKONA LIGHT DUTY SOLUTION III	ZIRKONA LIGHT DUTY SOLUTION IV
TMX20	Sit Down	36/48VDC	7160-1261	7160-1261-01	7160-1466	7160-1466-01
TMX25	Sit Down	36/48VDC	7160-1261	7160-1261-01	7160-1466	7160-1466-01
ESX12	Stand Up	36/48VDC	7160-1261	7160-1261-01		
ESX15	Stand Up	36/48VDC	7160-1261	7160-1261-01		
ESX15s	Stand Up	36/48VDC	7160-1261	7160-1261-01		
ESX17	Stand Up	36/48VDC	7160-1261	7160-1261-01		
ESX20	Stand Up	36/48VDC	7160-1261	7160-1261-01		
ESX22	Stand Up	36/48VDC	7160-1261	7160-1261-01		
ESX25	Stand Up	36/48VDC	7160-1261	7160-1261-01		
NPX15D	Stand Up Reach	24/36VDC	7160-1261	7160-1261-01	7160-1466	7160-1466-01
NPX17	Stand Up Reach	24/36VDC	7160-1261	7160-1261-01	7160-1466	7160-1466-01
NPX20	Stand Up Reach	24/36VDC	7160-1261	7160-1261-01	7160-1466	7160-1466-01
NPX22	Stand Up Reach	24/36VDC	7160-1261	7160-1261-01	7160-1466	7160-1466-01
WSRX	Walkie Pallet Jack	24VDC	7160-1356	7160-1356-01		

To select the correct mounting solution for your lift vehicle follow these steps:

- 1 Note the manufacturer, model name and vehicle voltage of your lift vehicle
- 2 Select the part number from GJ mounting solutions that corresponds to your lift vehicle (multiple options may be available depending on the lift vehicle)
- 3 Should you have questions regarding the listed mounting solution or cannot find a solution that corresponds to your lift vehicle contact us at (800) 487-9220. We will help you find a mounting solution that will meet your needs.





Follow us on



WWW.CLARKMHC.COM

CLARK® and TOTALIFT® are registered trademarks of CLARK Material Handling Company.
©2020 CLARK Material Handling Company.