

2021+ CHEVY TAHOE

PRODUCT OFFERING



CONSOLE BOXES

ITEM NUMBERS

- 7160-1566 Wide Body Console Box Only
- 7170-0848-XX Wide Body Console Kits
- 7160-1566-01 Wide Body Console Box with Printer Mount
- 7170-0864-XX Wide Body Console Box with Printer Mount Kits

FEATURES

- Wide body design maximizes mounting space
- Push-button locking storage compartment keeps valuables safe and includes one rectangular knock-out and one 12V outlet knock-out
- Mounts to existing OEM mounting points for a quick installation, with no drilling required
- Computer and devices can be easily mounted to the 3-hole pattern on either driver or passenger side
- Includes three 12 volt plug knock-outs, three USB power ports, and two mic mount locations



VEHICLE BASE AND KITS

ITEM NUMBERS

- 7160-1332 Vehicle Base
- 7170-0865-XX Pedestal Kits

FEATURES

- Easily attaches to the passenger side seat rails with no drilling required
- Included angled step positions the pole system close to the center console, providing adequate leg room for passengers
- Vehicle specific support brace stabilizes the pedestal system to reduce vibration when driving through rugged terrain
- Pedestal kits provide user with multiple motion attachment options to fit their specific mounting needs



CLOSE-TO-DASH MOUNT

ITEM NUMBERS

- 7160-1010 Close-To-Dash Mount

FEATURES

- Compatible with tablets and convertible laptop docking stations
- Easily mounts to the top of the console box using the 3-Hole pattern
- Pair with one of our Mongoose® Motion Attachments for added flexibility



CARGO STORAGE

ITEM NUMBERS

- 7160-1498 Trunk Drawer
- 7160-1604 2021+ Chevrolet Tahoe Trunk Drawer Leg Kit

FEATURES

- Cargo storage for gear and equipment
- Features a dual lock system to keep equipment secure
- Sliding drawer has vent cutouts to keep equipment cool and reduce the risk of overheating
- Inverted top provides additional mounting space
- Knockouts around the top frame to attach cargo net or bungee cords



PUSH BUMPERS

ITEM NUMBERS

- 7170-0849-00 Steel Push Bumper with Standard Bar
- 7170-0849-01 Steel Push Bumper with Light Bar
- 7170-0849-02 Aluminum Push Bumper with Standard Bar
- 7170-0849-03 Aluminum Push Bumper with Light Bar

FEATURES

- Center bar provides additional mounting space for lighting and sirens
- Designed with powder coated steel mounting brackets for additional strength and corrosion resistance
- Add Gamber-Johnson Side Light Brackets (7160-1435) for increased visibility



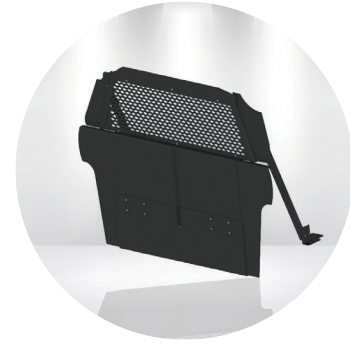
POLY PASSENGER PARTITION

ITEM NUMBERS

- 7170-0975 Poly Passenger Partition

FEATURES

- Scratch-resistant poly center panel with sliding window allows driver to maintain clear visibility
- Extended foot wells allow for a wide range of seat motion, allowing for optimal comfort of the driver and front passenger
- Center recessed panel provides a convenient mounting location for weapon mounts and equipment



MESH CARGO PARTITION

ITEM NUMBER

- 7160-1557 Mesh Cargo Partition

FEATURES

- Mesh partition creates a secure barrier between cargo equipment and the rear passenger
- Flat panel allows for mounting of different fuse panels and various equipment
- Full width bottom mounting bracket adds stability to the partition



WINDOW GUARDS

ITEM NUMBERS

- 7160-1560 Poly Window Guards
- 7160-1594 Universal Light Bracket

FEATURES

- Scratch-resistant Poly Window Guards provide protection while still retaining driver visibility
- Slotted design allows for airflow and ventilation through rear windows
- Quickly and easily installs to vehicle window frame
- Includes mounting holes for the Universal Light Mount Brackets (7160-1594) to increase vehicle visibility when driving through intersections



WINDOW BARS

ITEM NUMBERS

- 7160-1558 Vertical Window Bars
- 7160-1594 Universal Light Bracket

FEATURES

- Steel window bars provide protection while still retaining driver visibility
- Quickly and easily installs to vehicle window frame
- Includes mounting holes for the Universal Light Mount Brackets (7160-1594) to increase vehicle visibility when driving through intersections
- Fully welded construction for maximum strength and reliability



GUN MOUNTS

ITEM NUMBERS

- 7160-1097-01 Single Weapon Gun Mount
- 7160-1097-02 Dual Weapon Gun Mount
- 7160-1097-03 Dual Weapon Gun Mount (SC-6 Gunlocks Only)
- 7160-1578 SC-6 Gunlock with Bracket

FEATURES

- Dual channel system allows full adjustability of lock heads and butt plates
- Sliding mounting brackets provide adaptability to horizontal or vertical installations
- Adjustable brackets for flush or offset mounting
- Coated butt plate protects weapons from damage